

31/07/2024

Transport Strategy
Loxley House
Station Street
Nottingham
NG2 3NG

Western Boulevard/Beechdale Road Junction – Improvement Works

Dear Resident,

As works approach the final phase on the Western Boulevard/Beechdale Road junction, resurfacing works are required to remove the depleted existing carriageway and temporary surface installed during construction. Resurfacing the carriageway will improve the road surface for all road users through one of Nottingham's main arterial routes.

The resurfacing works are programmed to take place between 5th August 2024 and 26th August 2024. These works will be undertaken during the hours of 10pm to 6am.

The surfacing phases are as shown below and on the overleaf.

- Week 1 – 5th August 2024 – 12th August 2024 - Southbound Closure of Western Boulevard
- Week 2 – 12th August 2024 – 19th August 2024 – Northbound Closure of Western Boulevard
- Week 3 – 19th August 2024 – 26th August 2024 – Beechdale Road Closure

During this time vehicles will be required to parked off street, either on private drives or on neighbouring streets. Cones will be placed out in advance to prevent parking. Access to private drives within these times will not be possible due to the works, but residents will be notified in advance by the site team.

Bus services 28, 53 & 54 which use these routes will be affected and diverted throughout these times. We are working with local bus operators to agree these routes in advance.

Works will generate substantial amounts of noise through the use of heavy plant and machinery. We will work hard to minimise disruption throughout these works, and apologies for any inconvenience we cause. Should you have any questions, please contact me via email at cycling@nottinghamcity.gov.uk

More information on the project can be found at www.transportnottingham.com/project/beechedale-and-wigman

Kind regards

Kyle Howard

Project Manager

BWB Consulting Ltd working on behalf of Nottingham City Council





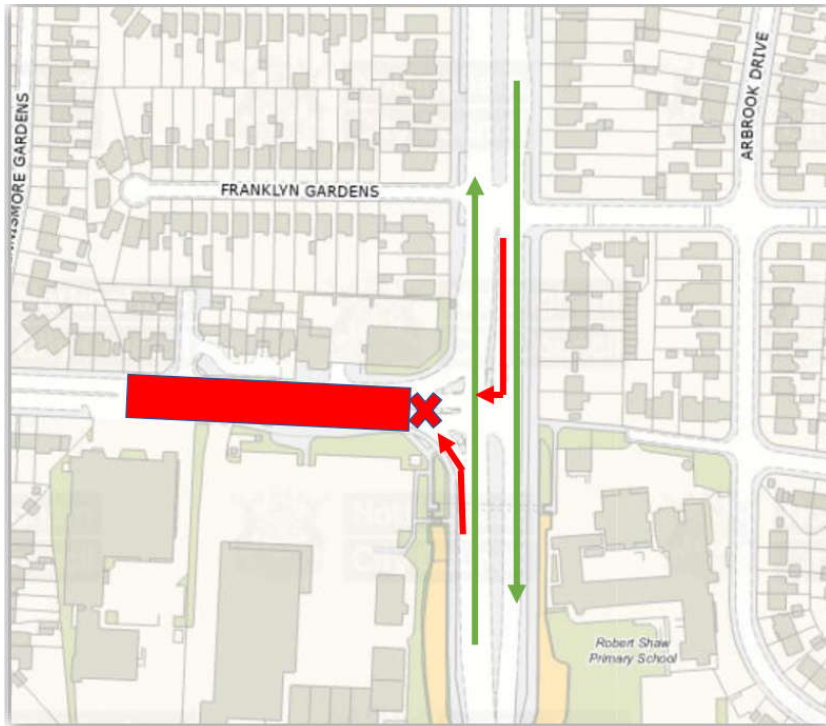
PHASE 1
5th Aug to 12th August
10pm to 6 am

-  Area to be surfaced
-  Route closed



PHASE 2
12th Aug to 19th August
10pm to 6 am

-  Area to be surfaced
-  Route closed



PHASE 3
19th Aug to 26th August
10pm to 6 am

-  Area to be surfaced
-  Route closed