

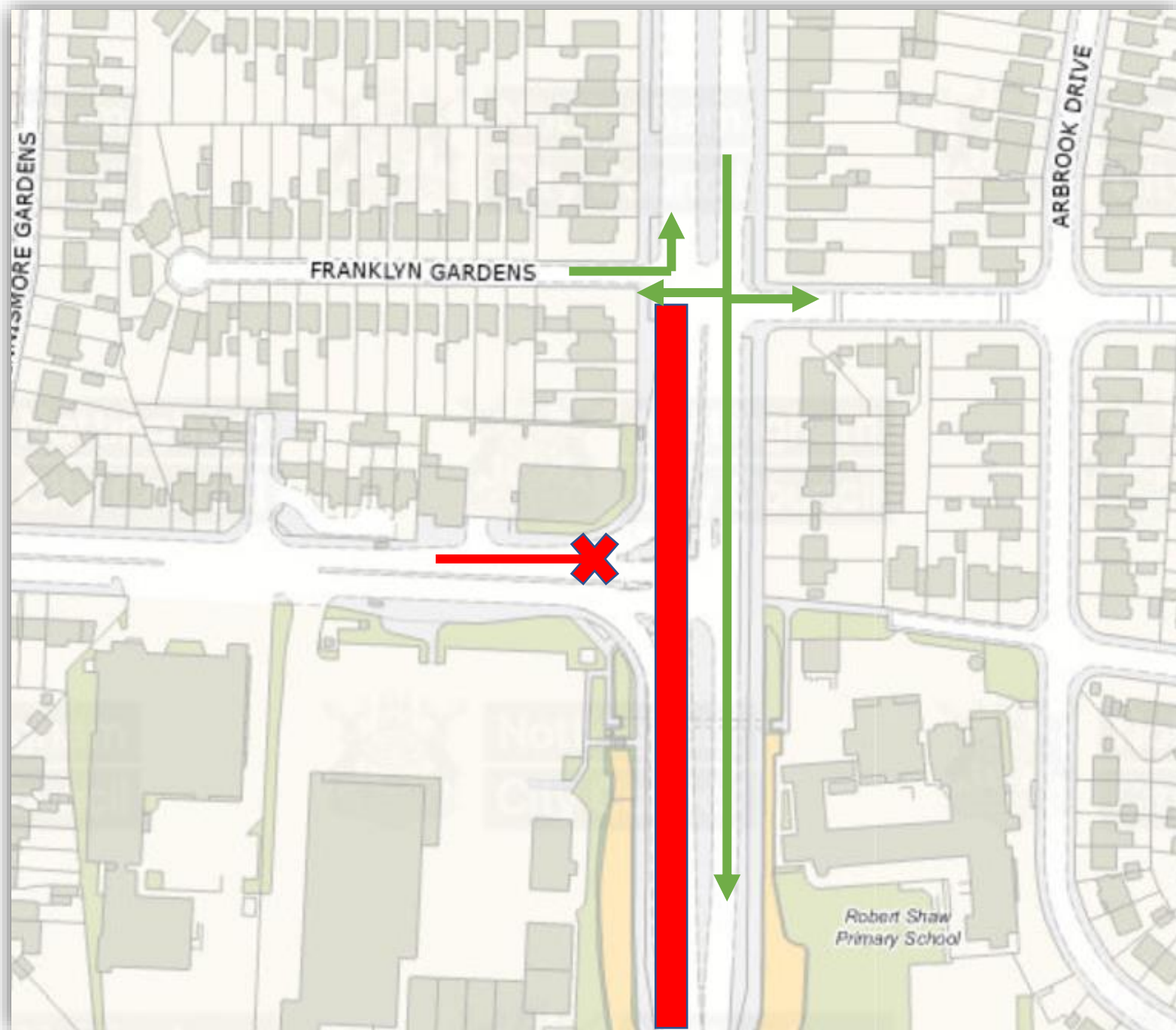




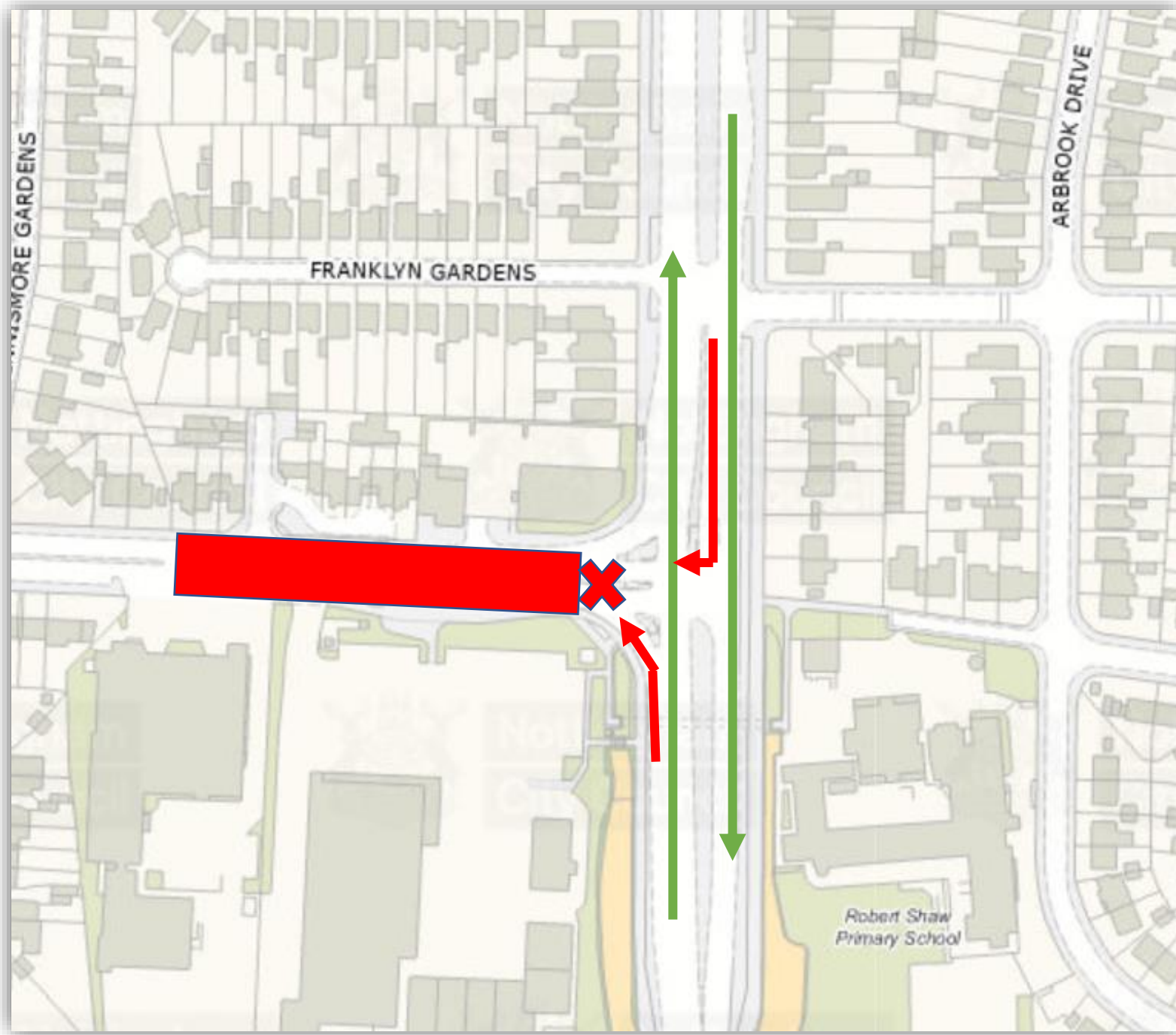
PHASE 1
5th Aug to 12th August
10pm to 6 am

-  Area to be surfaced
-  Route closed





PHASE 2
12th Aug to 19th August
10pm to 6 am

-  Area to be surfaced
-  Route closed



PHASE 3
19th Aug to 26th August
10pm to 6 am

-  Area to be surfaced
-  Route closed