

Highways Planned Maintenance

Improving your roads



Nottingham City Council is planning to improve your road - London Road Gateway Maintenance and Greening Improvements

We are improving the footways and public realm along London Road, as per the plan overleaf. Phase 1 starts on 18th January until mid- May and Phase 2 will continue after this from Spring 2026 onwards.

Phase 1 improvements include:

- Footway resurfacing and repair and replacement of any broken and damaged paving slabs and blocks to improve the public realm
- Provision of new planting areas and improvement to existing ones
- New street furniture including benches, bollards and bins

How will this affect you?

Please see plan overleaf for areas of work and proposed dates of working. To note this is subject to change should we encounter any issues on site or adverse weather. To note:

- There will be off-peak lane closures, Monday to Friday from 9.30am to 3.30pm
- Pedestrian diversions will be in place
- Bus stop ME05 will not be in use for sections 1 and 2 of the works

Information on phase 2 will be sent out prior to work commencing.



If you have any general questions or concerns or require additional assistance during the works, please contact us at highwaymaintenance@nottinghamcity.gov.uk. If you have any immediate site concerns whilst works are taking place, please call Nottingham City Council on 0115 915 2000.

If these works are not running to schedule, we will update the website for Highways Planned Maintenance. Please visit: transportnottingham.com/highways or scan the QR code using a phone camera.

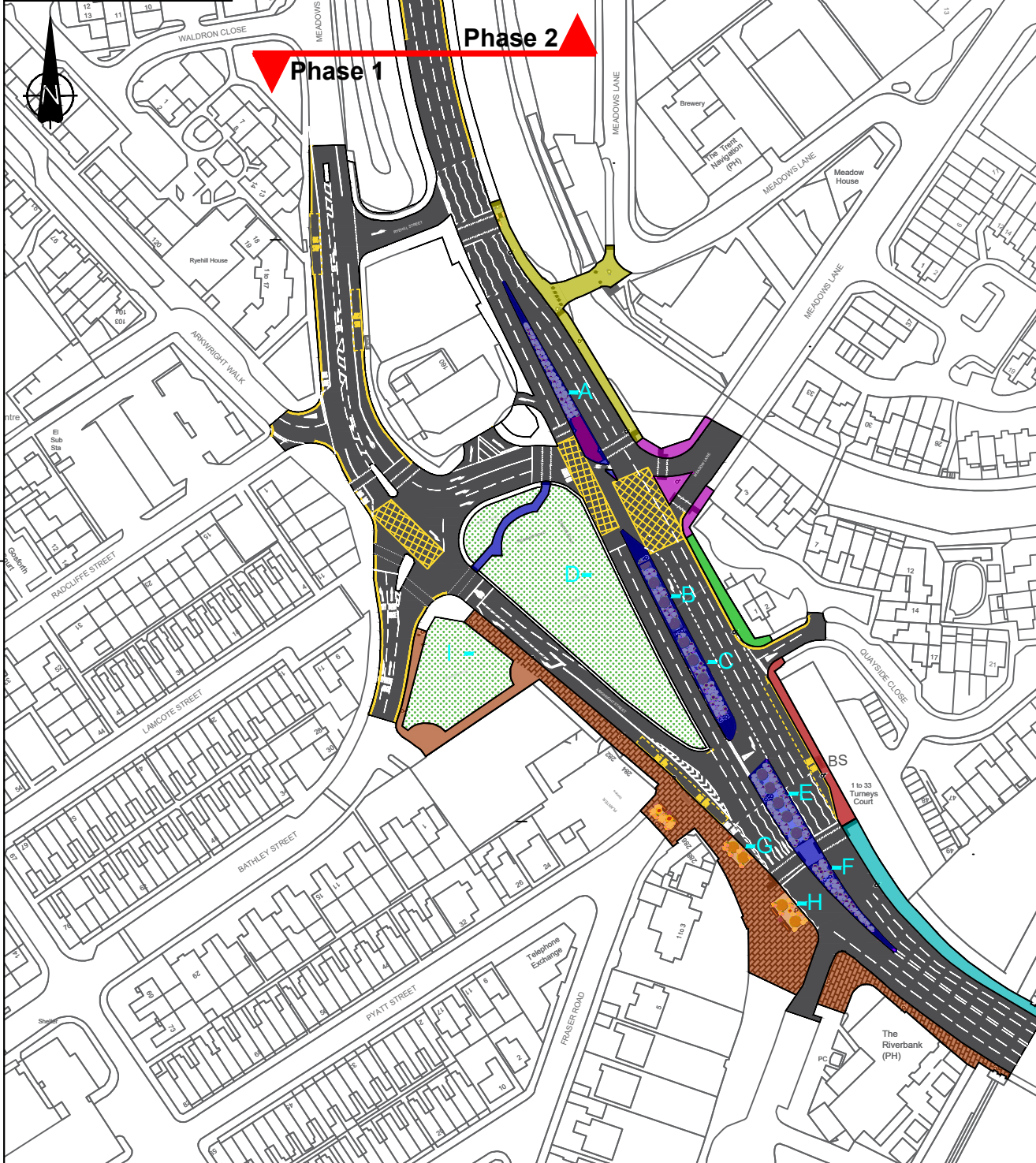


Funded by
UK Government

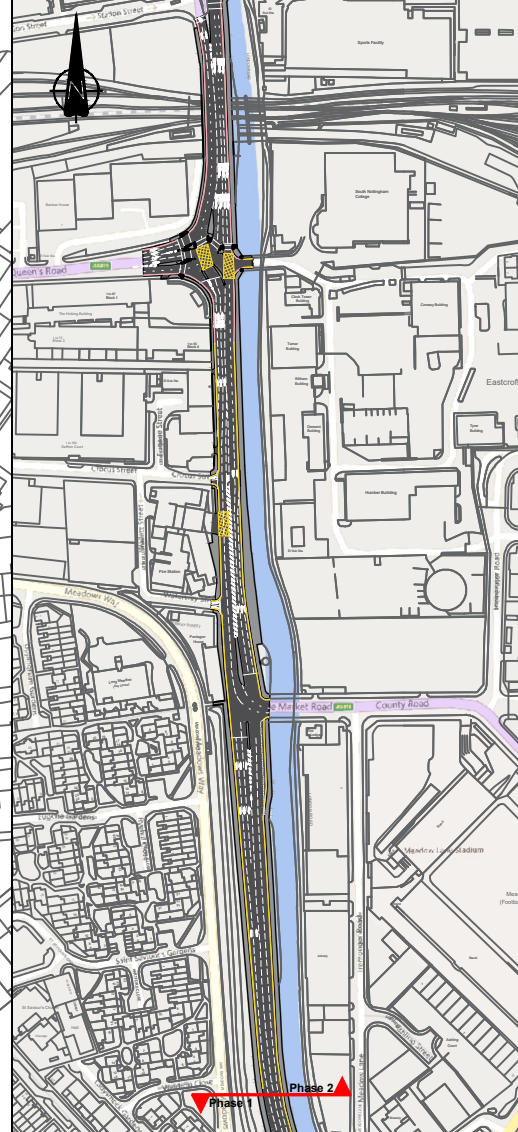


Nottingham
City Council

Phase One



Phase Two



Scheme London Road Gateway Maintenance and Greening Improvements

- Program of work**
- Section One - Trent Bridge to Turneys Court crossing, Completed
 - Section Two - Turneys Court crossing to Quayside Close, Completed
 - Section Three - Quayside Close to Meadows Lane, Completed
 - Section Four - Meadows Lane Junction, Completed
 - Section Five - Meadows Lane Junction to Ryehill Street, Completed
 - Section Six - Central Islands planting
 1. Construction works, Completed
 2. Preparing landscaping works 03 Apr
 3. Planting green areas: A,B,C,E,F TBC
 - Section Seven - Repair and replacement of any broken / damaged paving slabs to improve the public realm, Completed
- New pocket gardens areas G & H / Resin tree pits, planting dates TBC

- Key:**
- Footway surfacing extents
 - Footway to be lowered to carriageway level
 - Improvements to block paving
 - Removal of block paving and replacement with new greening, design to be confirmed
 - Improved tactile paving at crossings
 - Improved tactile paving on footways
 - Improved tactile paving on shared use cycle path
 - Carriageway expected upgrade 2027
 - Existing flag paving improved where required
 - Existing grass verge to be grass flower meadow areas D & I
 - Existing trees to remain
 - Upgraded bollards
 - Upgrade illuminated with new non-illuminated bollard
 - New bench locations
 - New bin locations
 - BS Bus Stop ME05

© Crown copyright and database rights 2025 OS AD000022898. You are granted a non-exclusive, royalty free, revocable licence solely to view the Licensed Data for non-commercial purposes for the period during which Nottingham City Council makes it available. You are not permitted to copy, distribute, disseminate, sell or otherwise make available the Licensed Data to third parties in any form. Third party rights to enforce the terms of this licence shall be reserved to OS.